

## Major Events in Burkina Faso

- 1896** Area claimed by French
- 1947** Present borders recognized
- 1959** Burkina Faso is 20 percent Muslim
- 1960** Independence from France
- 1966** First military coup
- 1984** Name changed from Upper Volta to Burkina Faso
- 2002** Cote d'Ivoire coup affects Burkina Faso economy
- 2004** **Compassion begins ministry efforts in the country**
- 2008** High cost of living leads to riots
- 2010** Census shows the nation is 61.5 percent Muslim
- 2012** **Compassion launches Survival in Burkina Faso (six centers with an average of 35 registered women per center)**
- 2014** Unrest leads to dissolving government
- 2015** New government and president (December)
- 2016** New prime minister (January)  
  
Islamic extremists attack a hotel, leaving 30 dead (January)  
  
Islamist group Ansar Dine kidnaps medical missionary couple (January)
- 2017** Islamic terrorists attack a restaurant, leaving 19 dead (August)
- 2018** Islamic militant attack leaves seven soldiers dead (March)  
  
**Compassion surpasses 80,000 beneficiaries (June)**  
  
**Compassion poised to reach 30,000 more beneficiaries within five years**

Burkina Faso means “land of upright/honest people.” Sadly, far too many of these upright people are suffering not only from the harsh effects of chronic extreme poverty, but also many other challenges.

In partnership with local churches, Compassion is striving to create the conditions in which every child in Burkina Faso has access to a good education, in which every child has enough to eat, and in which no child is forced to work for a living instead of attending school. Our child development centers provide an essential base for these efforts. They are staffed by workers who are dedicated to improving children’s lives in Jesus’ name and to reaching out to those most in need.

With your gracious partnership, together we can make a significant difference in the lives of thousands of at-risk children in Burkina Faso.



# Burkina Faso: Opportunities in a Desperate Nation



Prepared for Tom and Mary Vande Guchte  
Presented by Rob Porter









"Whoever welcomes one of these little children in my name welcomes me; and whoever welcomes me, does not welcome me but the one who sent me."


— Mark 9:37, NIV

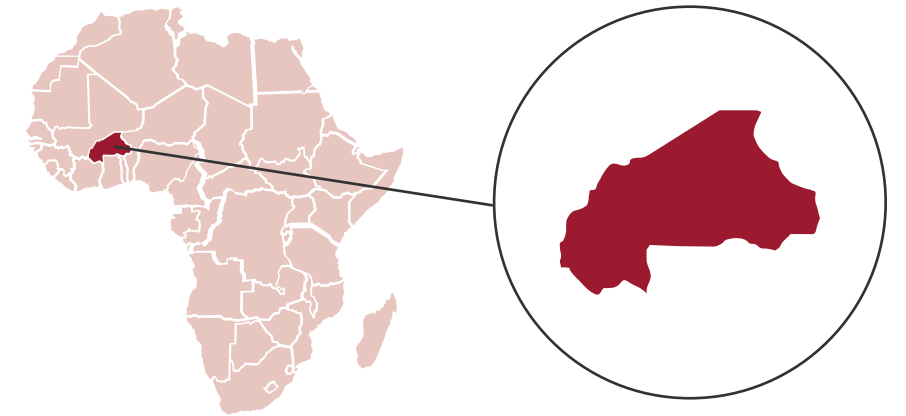
## The Need For Assistance in Burkina Faso is Vast, but the Future is Promising

 **Location:**  
Western Africa

 **Population:**  
20.1 Million

 **Predominant Religion:**  
Islam (61.5 percent)

 **Compassion Active:**  
Since 2004



Area of Critical Need	Amount Requested
Prenatal Care and Infant Survival	\$815,061
New Church-Based Centers	\$971,077
Safe Water and Sanitation	\$753,798
Education and Income Stability	\$2,024,886
Health and Protection	\$2,960,349
<b>Total</b>	<b>\$7,525,171</b>

**Total Projected Need: \$7,525,171**

*Any excess funds raised through this effort or funds unable to be invested as originally intended will be invested in addressing similar pressing needs. This budget covers all program, administration and fundraising costs commensurate with Compassion's corporate guidelines. Administration costs will not exceed 21.67% of the funds contributed.*



## Essential Milestones for Burkina Faso in FY19

### PRENATAL CARE AND INFANT SURVIVAL

- Increase number of churches implementing Survival from 33 to 45
- Reduce the low birth weight rate for Compassion-assisted infants by 2 percent



### NEW CHURCH-BASED CENTERS

- Expand the number of registered children from 85,665 to 97,115
- Launch 39 new church-based centers for a total of 330 centers



### EDUCATION AND INCOME STABILITY

- Equip 1,060 youth and caregivers with income-generating skills training
- Provide 500 students with access to higher-level education
- Empower 5,000 students with vocational/technical training opportunities



### SAFE WATER AND SANITATION

- Provide access to safe water at church-based centers for 11,500 people
- Create adequate sanitation facilities at church-based centers for 10,000 people
- Teach 3,500 children to practice good hygiene habits



### HEALTH AND PROTECTION

- Distribute \$835,685 to meet the urgent and immediate needs of children
- Decrease number of children contracting malaria by 10 percent
- Administer meningitis immunizations to 11 percent more children
- Raise the HIV/Aids screening rate by 13 percent



## An Appeal From the Front Lines of Burkina Faso

DR. ISSAKA KIEMTORE  
COMPASSION NATIONAL DIRECTOR

Warm greetings from Burkina Faso in the name of our Lord and Savior Jesus Christ!

We are thankful to the Lord for the privilege to serve 85,000 of Burkina Faso's children in partnership with 291 local churches and thanks to your generous and valuable support.

Compassion Burkina Faso has been intentionally helping children through sponsorship as well as critical interventions. Some of these interventions include creating opportunities for access to education, health care, safe water and sanitation, income generation, skill training and seeing that centers have the facilities they need to serve children. Most urgently, we are currently facing various health challenges with children including malaria, meningitis, hepatitis B and HIV/AIDS. There is also a high rate of poverty-related diseases among registered children, such as skin diseases, diarrhea, dysentery and tooth decay.

Our goal is to equip these church-based centers by providing them with access to safe water and sanitation facilities, solar panels, playgrounds and more while building their capacity for healthy, holistic child development. Our dream is to see healthy, thriving and successful registered children.

Being aware that the Lord is giving us this opportunity in this specific season to make a significant difference on thousands of children, we appreciate your willingness to support our efforts.

Sincerely,



National Director, Dr. Issaka Kiemtore



# Shining Light in the Darkness

The time to invest in the church in Burkina Faso is now. Islamic terrorist attacks continue to increase, specifically targeting Christians. In a nation that is over 60 percent Muslim — a reality that is progressively echoed in surrounding West African countries — Compassion’s church partners are poised to share the truth that transforms lives with the communities, families and children they serve. They just can’t do it alone.

In a nation of some 20 million people, where close to nine million live in extreme poverty, daily struggles are common, especially for children. While we are grateful to God for the over 85,000 children benefiting from Compassion’s support and care at 291 church-based centers, millions of Burkinabe children continue to live in poverty. To address this vast need, over the next five years Compassion is ready to expand the number of church-based centers and increase the number of children served through child sponsorship in Burkina Faso by over 30,000.

But this need cannot be met solely through child sponsorship. Although sponsorship is foundational to Compassion’s success, our holistic child development model often requires help beyond sponsorship, taking a strategic, long-term approach to what we do. That’s where critical, focused interventions like this step in to make a life-altering difference.

We strongly believe that local churches are key to Compassion’s efforts — they know best how to allocate and direct their resources to meet the greatest needs in their context. With their close partnership, we’ve identified five critical areas of interventions needed to change even more lives in Burkina Faso:

- Prenatal care and infant survival.
- New Compassion centers.
- Education and income stability.
- Safe water and sanitation.
- Health and protection.

The next section explains our overall program model, highlighting the important role these critical interventions play.

<sup>1</sup>World Bank, “Poverty & Equity Data Portal” (2018). <sup>2</sup>World Factbook, “Burkina Faso” (October 2018). <sup>3</sup>World Bank, “People using at least basic sanitation services, rural” (2015). <sup>4</sup>World Food Programme, “Burkina Faso” (2018). <sup>5</sup>Compassion International (August 2018). <sup>6</sup>Compassion International (August 2018). <sup>7</sup>World Bank, “Mortality rate, infant (per 1,000 live births)” (2017).



## SAFE WATER AND SANITATION

Safe water and sanitation facilities are desperately needed in Burkina Faso, where waterborne diseases are a serious threat to children. Compassion’s Water, Sanitation and Hygiene (WaSH) efforts provide much-needed relief. WaSH efforts reduce or eliminate time to process water for safe use. Safe water also reduces or eliminates the long distance to water points, the physical difficulty of drawing up water, and the long lines that form to access water. Borehole wells, water tanks, filtration systems, hygiene training and latrines all help children thrive.

🇸 Target Funding: \$753,798

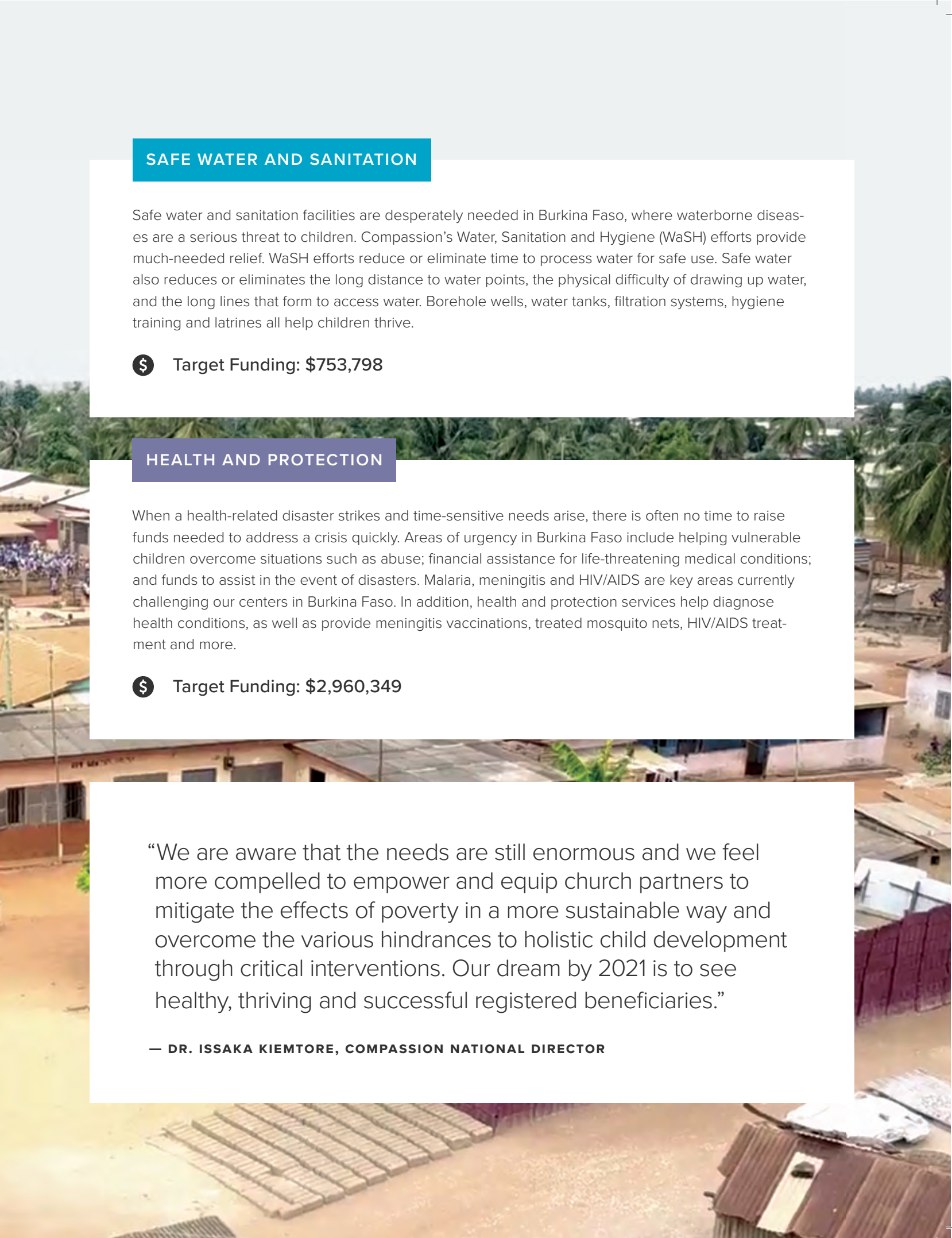
## HEALTH AND PROTECTION

When a health-related disaster strikes and time-sensitive needs arise, there is often no time to raise funds needed to address a crisis quickly. Areas of urgency in Burkina Faso include helping vulnerable children overcome situations such as abuse; financial assistance for life-threatening medical conditions; and funds to assist in the event of disasters. Malaria, meningitis and HIV/AIDS are key areas currently challenging our centers in Burkina Faso. In addition, health and protection services help diagnose health conditions, as well as provide meningitis vaccinations, treated mosquito nets, HIV/AIDS treatment and more.

🇸 Target Funding: \$2,960,349

“We are aware that the needs are still enormous and we feel more compelled to empower and equip church partners to mitigate the effects of poverty in a more sustainable way and overcome the various hindrances to holistic child development through critical interventions. Our dream by 2021 is to see healthy, thriving and successful registered beneficiaries.”

— DR. ISSAKA KIEMTORE, COMPASSION NATIONAL DIRECTOR





# Five Critical Intervention Areas

## PRENATAL CARE AND INFANT SURVIVAL

Burkina Faso has the highest infant mortality rate of all Compassion countries. Compassion seeks to help both caregivers and babies thrive physically and spiritually. Survival efforts provide staff training, nutritional support, growth-monitoring equipment, toys that encourage cognitive and motor skills, Bible study materials, one-to-one care from a Survival Specialist, pre- and post-natal care, skilled birth attendants, immunizations, literacy classes and more.

💰 Target Funding: \$815,061

## NEW CHURCH-BASED CENTERS

New church-based centers will carry hope to new areas, as Compassion seeks to connect every precious child in its program with a unique sponsor. Contributions will launch church-based centers in areas of greatest need and equip them with the infrastructure and resources they need to increase sponsorship by 30,000 children. Every child receives numerous benefits at their center including medical checkups, nutritious food, health and hygiene training, educational help, mentoring, a safe environment and spiritual development.

💰 Target Funding: \$971,077

## EDUCATION AND INCOME STABILITY

Young people need hope as they discover their God-given potential. Compassion helps youth cultivate their abilities through vocational training opportunities, continued education, covering costs related to schooling such as books and supplies and more. Caregivers also benefit from income-generation training, which helps provide financial stability and equips caregivers with key entrepreneurial skills so they can provide for their families.

💰 Target Funding: \$2,024,886



### WHY BURKINA FASO?

- 44 percent of the population lives in extreme poverty<sup>1</sup>
- 7 percent of the population identify as evangelical Christians<sup>2</sup>
- 88 percent lack basic sanitation services in rural areas<sup>3</sup>
- 10 percent of children suffer from acute malnutrition<sup>4</sup>
- 50 percent of youth ages 15-24 are illiterate<sup>5</sup>
- 49 percent of children under 5 with malaria die<sup>6</sup>
- 51 babies die for every 1,000 live births<sup>7</sup>





# Holistic Child Development: Releasing Children from Poverty in Jesus' Name

Children born into poverty are vulnerable, lacking opportunities and resources to grow into the confident and empowered adults that God created them to be. This is especially true in Burkina Faso, where millions live in extreme poverty.

At Compassion, we believe that central to God's heart is that children are known, loved and protected. Our holistic child development program, delivered through the local church, is focused on children and has been proven time and again to help them escape the cycle of poverty. But we strive to not only release children from their physical poverty, but spiritual poverty as well. Every registered child that enters a church-based center learns that Jesus loves them and came to offer the hope of eternal life.

Child Sponsorship provides much-needed and ongoing relief for children and families facing the challenges of extreme poverty. But targeted critical

interventions are essential to break down otherwise daunting barriers that keep children from developing. For instance, additional funding is especially crucial at the beginning of child development — ensuring that babies reach their first birthday prior to entering the sponsorship program — and at the end to equip youth to complete the program with quality educational and/or vocational training to achieve their dreams.

Other critical interventions include providing safe water by drilling boreholes and wells, and addressing pressing health concerns such as the need for meningitis vaccines or mosquito nets to protect against malaria.

With the help of caring sponsors and partnership with invested donors, each registered child receives the care they deserve to realize their full, God-given potential.

## Compassion's Child Development Model

